



CRANE

Comprehensive Treatment of Chronic Patients in Rural Areas

BROKERAGE - SESSION



Funded by
the European Union

This project has received funding from the European Union's Horizon 2020 research and innovation programme under grant agreement No 965277

Privacy Notice

- *This webinar will be recorded and made available publicly in CRANE website and/or potentially other related social media, being handled according to CRANE privacy policy.*
- *Continuation in the session implies the acceptance of such terms, since we do not have technical means for removing your involvement in the recording.*

Introduction to OMC

What is CRANE, OMC, PCP?

CRANE Project

It is a H2020 project funded by the EU with the objective of supporting the tender of a R&D solution for chronic patients in rural areas

Open Market Consultation

It is a process for gathering information from market suppliers and informing the market about procurement plans and needs of public authorities.

CRANE PCP

It is a public tender for the procurement of R&D services. It funds 100% the development and testing of a R&D solution for CRANE needs. No benefit margin, only real costs

OMC Objectives

1 Explain precommercial procurement (PCP) process

2

Encourage proactive communication with providers and stakeholders to engage them in CRANE design and PCP

3

Inform potential suppliers about CRANE PCP opportunities

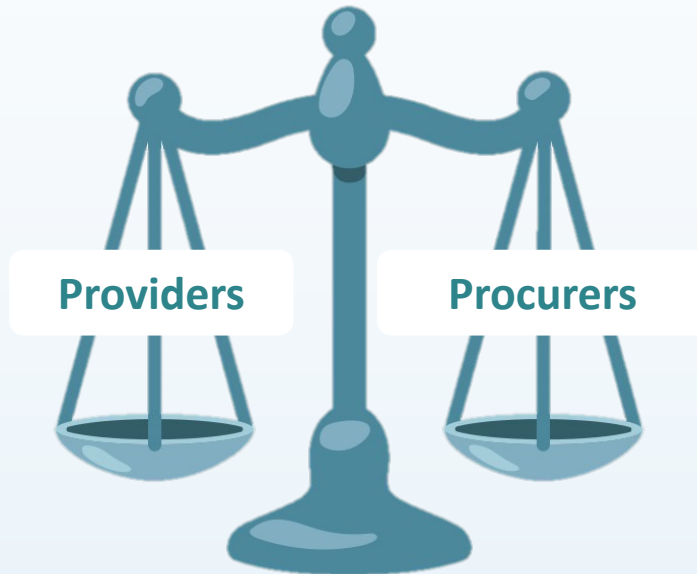
4

Facilitate matchmaking and cooperation among the different operators

OMC scope

A win to win strategy

- They will get information about the PCP and the **procurers needs and priorities**.
- They will also get to know possible **partners or competitors**



- They will focus their assumptions for the tenders call and make potential **bidders aware**.
- They will obtain new insights into the **market's appetite**.

OMC Brokerage

SAVE THE DATE

10:00-12:00 CET

<https://crane-pcp.eu/events/>



Sunday	Monday	Tuesday	Wednesday	Thursday	Friday	Saturday
<i>JUNE 2022</i>						
5	6	7	8 Brokerage	9	10	11

OMC Brokerage

8th of June

10:00-12:00 CET

<https://crane-pcp.eu/events/>



WHAT FOR

To support the creation of Consortia for applying to CRANE tender.

HOW

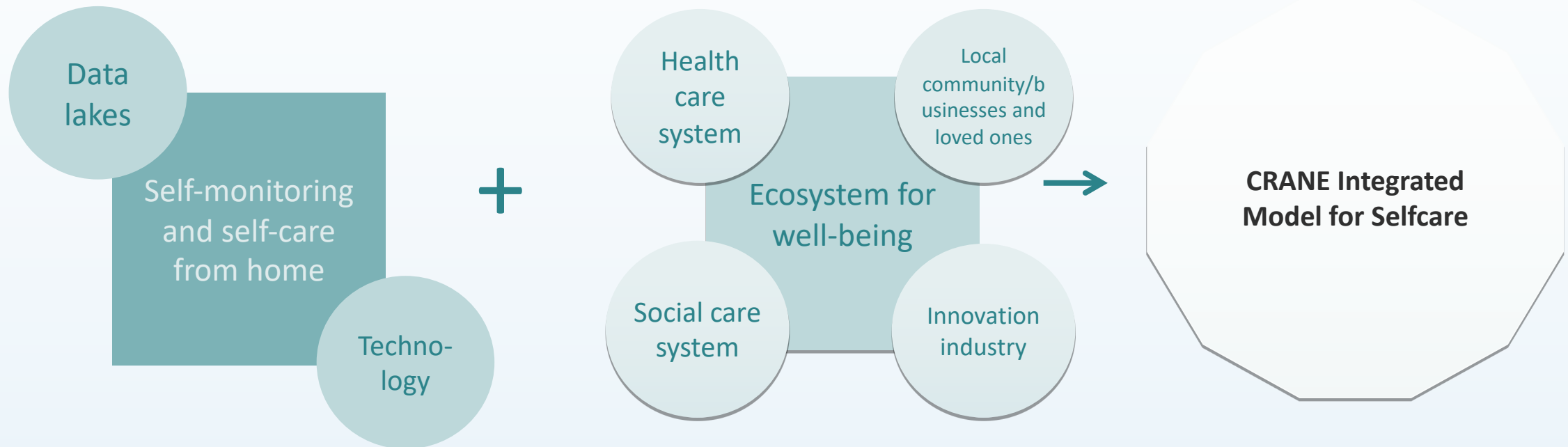
A template will be provided for 3 min pitch and 2 min Q&A. You will be able to introduce yourself, your project idea and the type of partners you are looking for

REQUIREMENTS

To make a presentation it will be needed **to have filled in the CRANE questionnaire and be in our matchmaking tool**

Solution

CRANE model is based in two pillars



Target patients



**cardiovascular diseases
(CVDs)**



**chronic obstructive pulmonary
disease (COPD)**



**diabetes
(type 1 and 2)**

For the **CITIZEN**, enabled through public & private data access

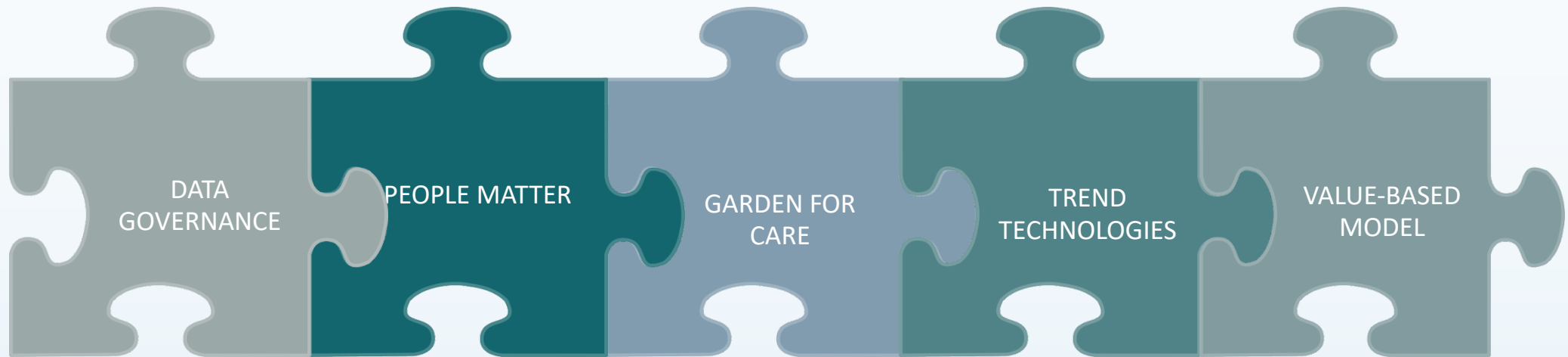
Who are at risk or have a chronic condition which requires action, and wants to self-manage or improve the management of their health

CRANE makes the citizens public & personal health data automatically accessible and provides through intelligent technologies new smart and tailored insights.

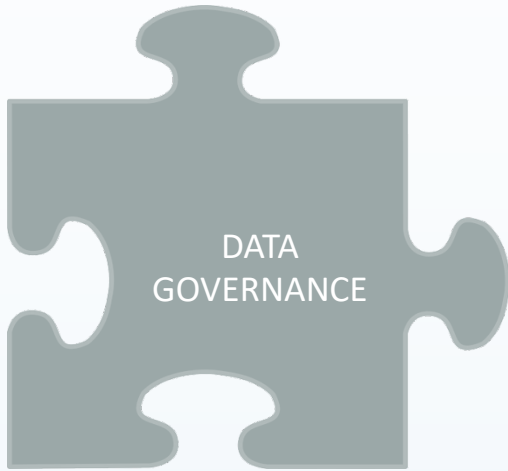
Unlike current siloed health and social care provision, **CRANE** provides the citizen with open & trustworthy control of their own data AND the use of it.

CRANE's Vision

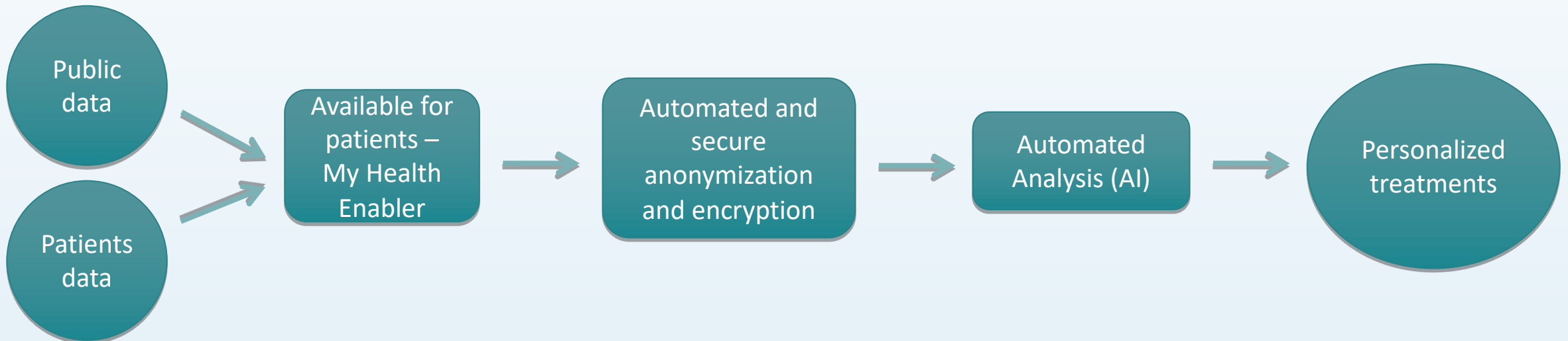
CRANE Building blocks

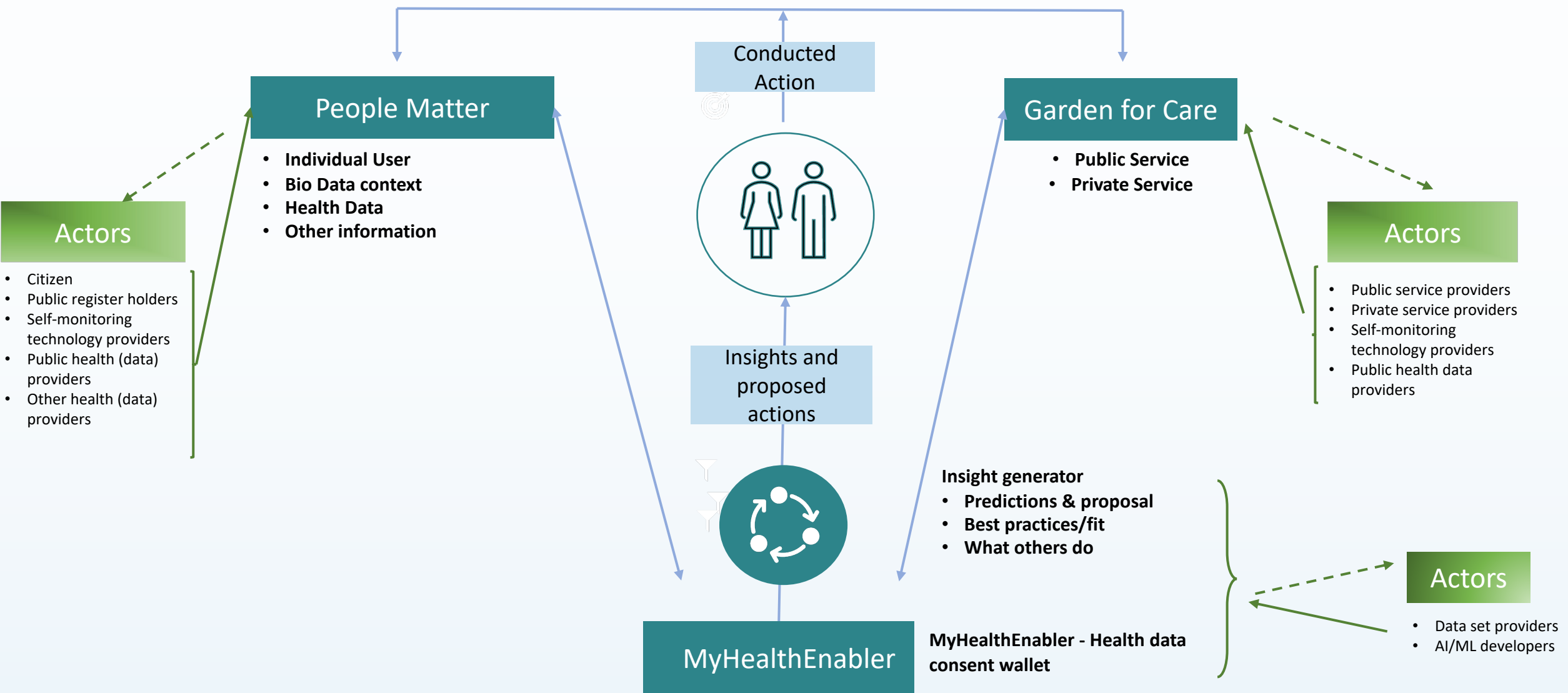


How to do it



- 1 Using public and specific data from patients to their own benefit





- Actors**
- Citizen
 - Public register holders
 - Self-monitoring technology providers
 - Public health (data) providers
 - Other health (data) providers

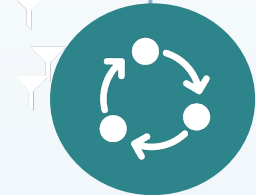
People Matter

- Individual User
- Bio Data context
- Health Data
- Other information

Conducted Action



Insights and proposed actions



MyHealthEnabler
MyHealthEnabler - Health data consent wallet

Garden for Care

- Public Service
- Private Service

- Insight generator**
- Predictions & proposal
 - Best practices/fit
 - What others do

Actors

- Public service providers
- Private service providers
- Self-monitoring technology providers
- Public health data providers

Actors

- Data set providers
- AI/ML developers

- Trend Technologies – Secure data privacy, enabling safe and protective data access
- Data Governance – Framework of how CRANE get and use data and what to do with it
- Value Base – Provide the baseline reference and the results of improvements

- Data management plan
- GDPR
- EU data governance act

- Privacy and anonymization
- Blockchain, multiparty computation

Indicators
- Societal, healthcare and care, individual level

OMC Questionnaire



<https://crane-pcp.eu/questionnaire/>

Goals

Gather market insights

Align the tender documents with potential solutions

SECTION 2. CRANE's Scope

CRANE is focused on the development of an open interoperable platform which allows the extensive use of public and private data for the diagnosis, prevention and treatment of chronic conditions (cardiovascular diseases (CVDs), diabetes (type 1 and 2) and chronic obstructive pulmonary disease (COPD)).

Please refer to our additional Scope and Uses Cases documents available at CRANE's website for additional information.

2.1 General questions

* 2.1.1 Is CRANE scope clear?

Yes
 No

Please provide any additional comment

* 2.1.2 Do you think CRANE's objectives are feasible? And its targeted pathologies and results?

Yes
 No
 I do not know

Please provide any additional comment

* 2.1.3 What are in your opinion the main challenges for the deployment of CRANE?

* 2.1.4 Do you have, fully or partially, any solution or experience to address the proposed challenges?

Yes
 No
 Partially

Please provide any additional comment

Matchmaking tool

<https://crane-pcp.eu/matchmaking/>

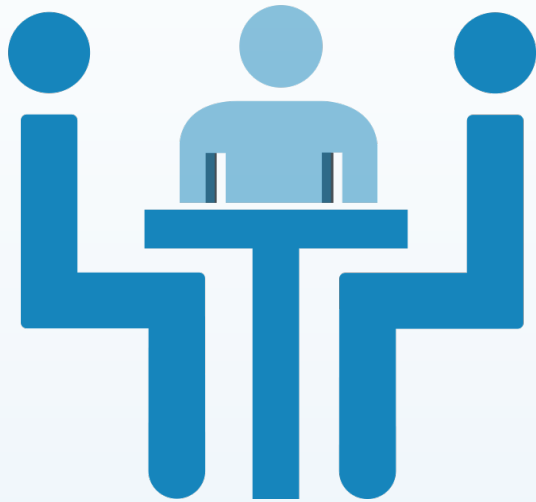
Matchmaking Form

To be listed on the matchmaking platform, please fill in this form.

Enhance your success chances building a strong consortium

Let us help you to find the ideal partners to participate in CRANE PCP

Bilateral Meetings



OPENING TODAY!!!

First come, first served

45 min allocation discussion with us on any of the potential following dates:

- 18th, 25th of May;
- 1st, 15th of June.

REQUESTS THROUGH OUR WEBSITE



CRANE

Working together to improve patients with chronic conditions wellbeing!



FIND US on our website <http://crane-pcp.eu/> and
stay tuned following our Twitter [@crane_pcp](https://twitter.com/crane_pcp)



This project has received funding from the European Union's Horizon 2020 research and innovation programme under grant agreement No 965277