



# Remote Patient Monitoring

# Tellu in a nutshell



## Who we are:

highly skilled persons within eHealth products, technical development, Operation, service delivery, Support

## What we are:

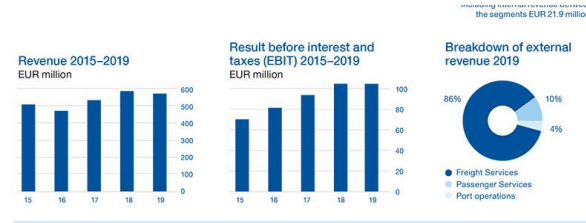
- Telecare, TeleHealth
- SaaS and PaaS
- Vision: Sustainable Health.

## Location:

- Lysaker, Oslo Area, Norway.



More than 100 Partners  
Growing internationally with key partners



## Rapid growth Key Figures

- 5-50 employees since 2017
- 0.7 - 10 M€ annual revenue since 2017
- 130 Norwegian municipalities, Market lead in Norway
- Present in Sweden and the Netherlands

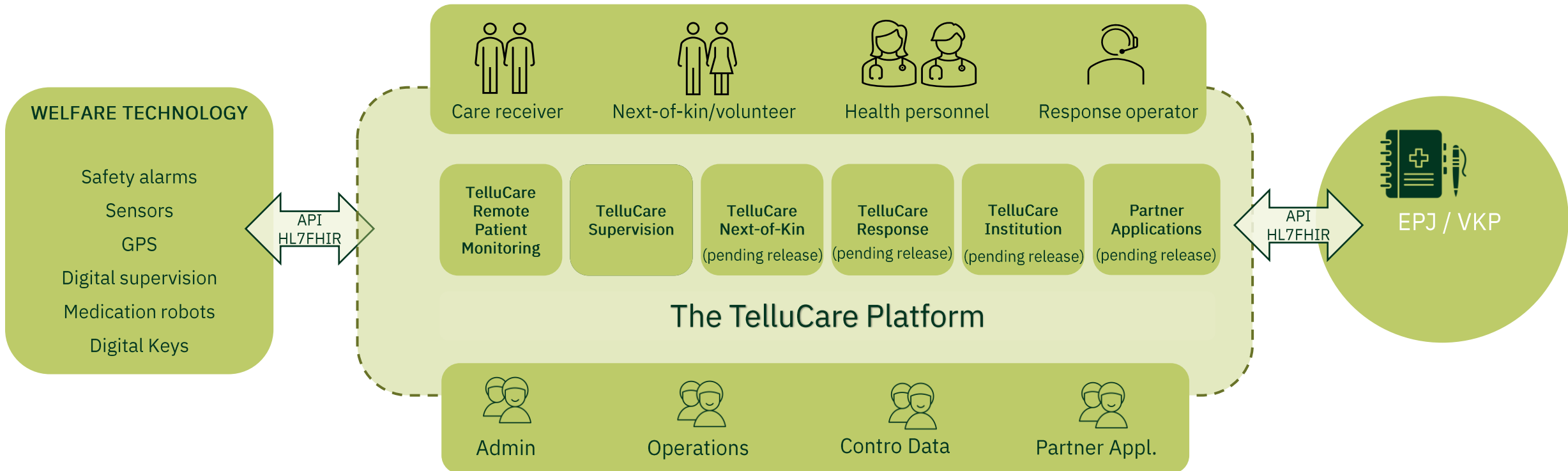


## Who owns us:

Telenor, SINTEF, Investinor and employees



# TelluCare Platform - The Ecosystem Approach



# Health services delivered by distance with the use of technology



# Health services delivered by distance with the use of technology



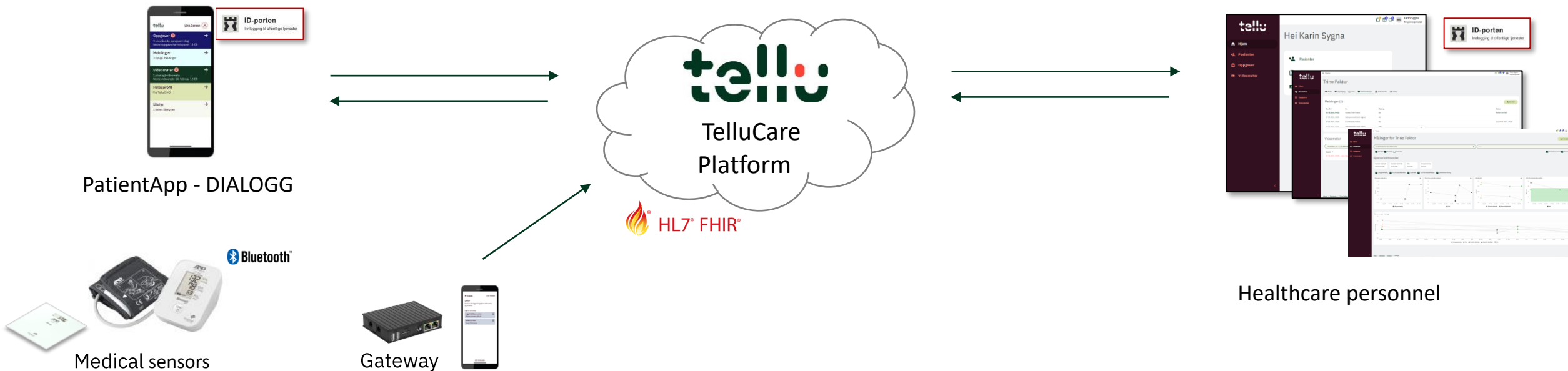
Patient

Monitoring, questionnaire, dialogue (chat, video)

Evaluate data / measurements, follow-up, prevention, dialogue (chat, video)



Healthcare worker



# TelluCare Product Family and platform

EPJ Integrations  
(VKP, Tieto Gerica, Visma,...)



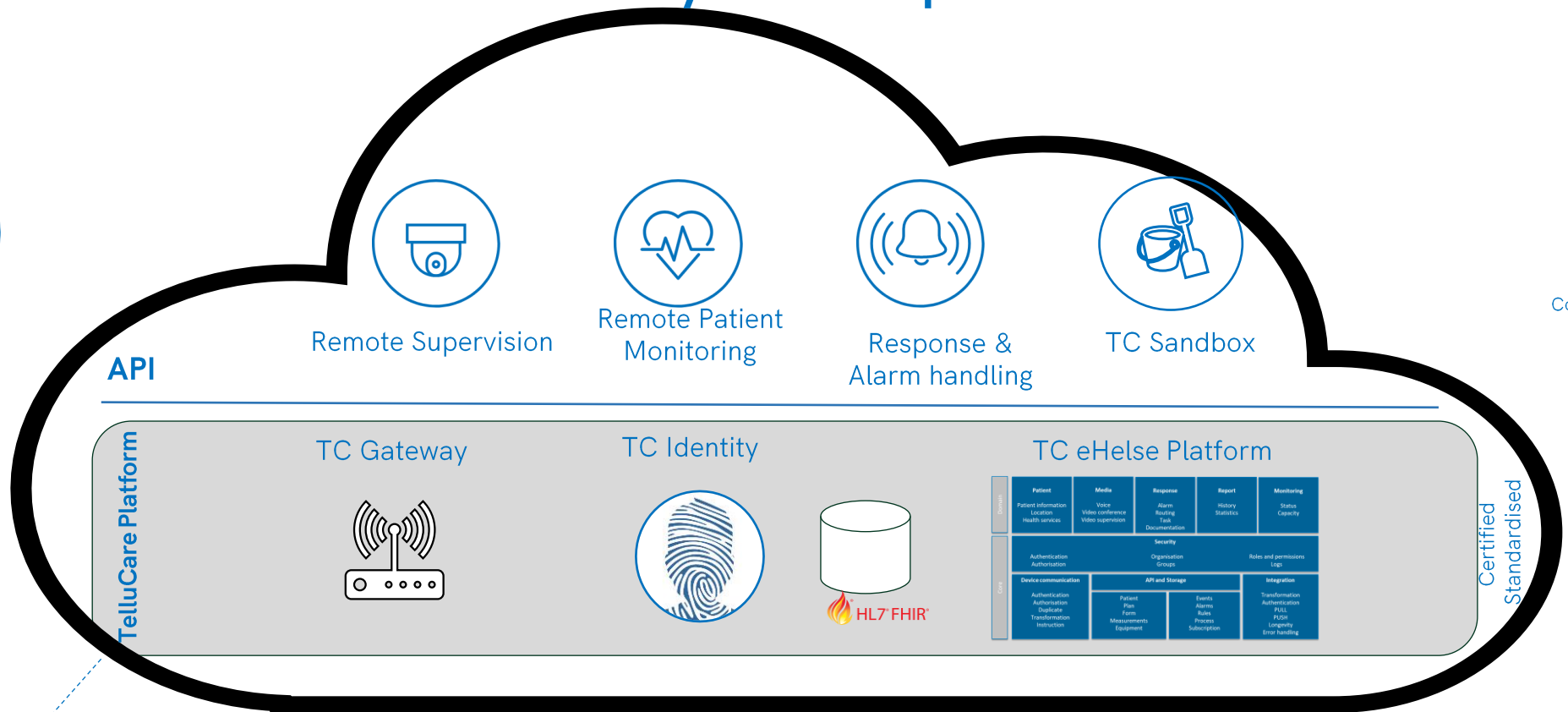
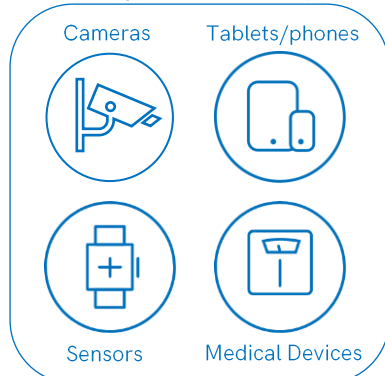
Response centre integrations  
(UMO...)



More 3<sup>rd</sup> party Integrations  
(Tieto eSense, Stanley MAS PhoniroCare ...)



Large Device Library



OpenID Connect HEART



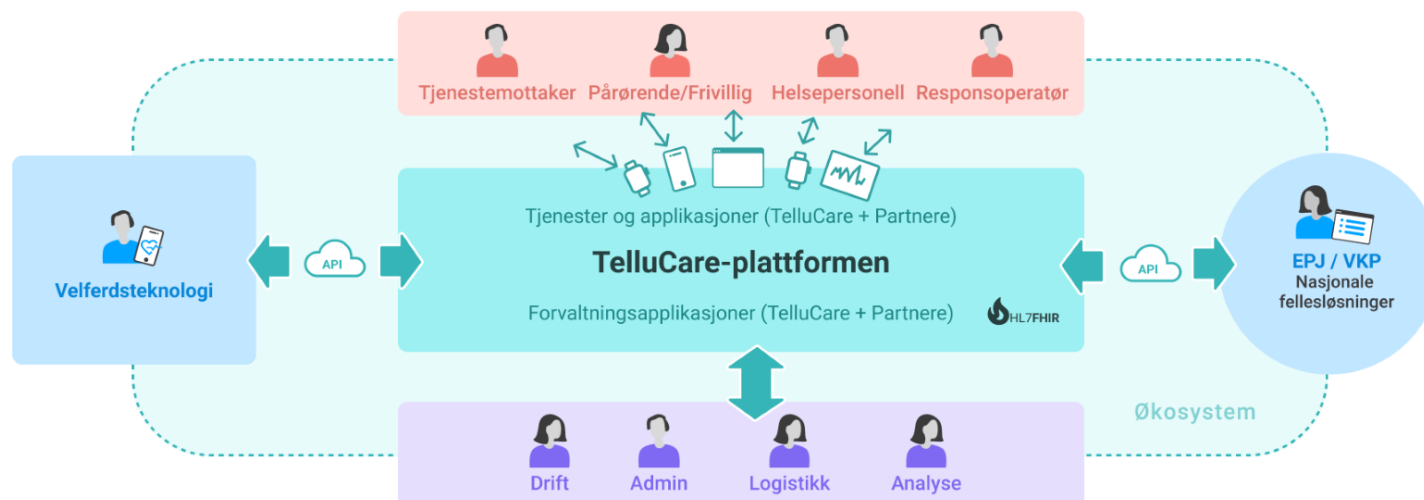
ID porten



**tellu**

# TelluCare

- **Tellucare** is the technology foundation for all Tellu software services, it allows:
  - Tellu services to be developed and maintained in a cost effective way
  - Tellu services to be seamlessly integrated with each other
  - Integrating Tellu services in partner's ecosystems
  - Integrating partner services in the Tellu ecosystem
- **Tellucare** is based on standards open-source and state of the art components
  - Native FHIR database, OpenID Connect for Auth and SSO, Open APIs
  - Strong focus on security and data protection by design
  - Developed, maintained and operated by in-house DevOps team
  - Avoid cloud vendor lock-in to cope with uncertain market requirements (e.g. Cloud Act in EU)



# Technology stack



## Main platform modules

- Gateway / Medical Measurement Questionnaires / Observation
- RPM Care Plan
- Next-of-kin Workflows
- Digital Supervision
- Safety alarm / Sensors
- Chat / Video Meetings
- Alarm management
- Mobile Safety Alarm + Location
- Personnel safety
- Admin / Device management
- Authentication and Access
- FHIR Based Patient Archive

## APIs

- GraphQL Patient API ↔ Patient app(s)
- MQTT Gateway API ↔ Devices / Gateways
- GraphQL Personnel API ↔ Personnel applications
- { REST } Alarm API ↔ Response center integration
- GraphQL Admin API